

Day 1

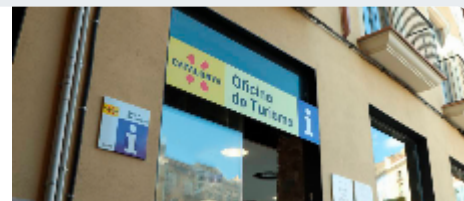
Tomorrow
9:00-16:00

Manresa

1 Tourist Office

Un servei complet al visitant

 1.00 Horas

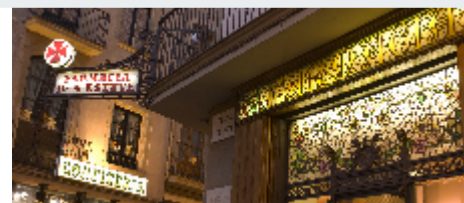


Manresa

2 Esteve Pharmacy

The Esteve Pharmacy, born from Esteve Laboratories, was founded in 1787 and has always been run by the same family: the Esteve family. In 1926, they decided to commission the architect Josep Fírmat to design the decorative elements for their pharmacy in Plana de l'Om square

 0.50 Horas



Manresa

3 Sastreria Tuneu (Tuneu Tailoring)

As we said, Carrer del Born was home to some of the city's most important shop

 0.50 Horas



Manresa

4 La Casa Torrents (La Buresa)

La Buresa is a great modernist building designed by the architect Ignasi Oms i Ponsa in 1908

 0.17 Horas



Manresa

5 Quiosc de l'Arpa (Arpa Kiosk)

Built in Modern Style and designed by Josep arquitecte Signed in 1917, was a new-stand until a few years ago

 0.17 Horas



Manresa

6 Cal Jorba

This building, standing in the heart of the city, sheltered the popular Jorba store for many years

🕒 0.17 Horas



Manresa

7 Casal Regionalista

Built by Alexandre Soler i March in 1918. Sober and regular, leaves behind the Modernist canons and it follows the Noucentisme style.

🕒 0.17 Horas



Manresa

8 Davant House

Ignasi Oms designed the Davant House in 1907 and it was enlarged by Josep Fírmat in 1936

🕒 0.17 Horas



Manresa

9 Lluvià House

This is a house with a garden, in an unbeatable location beside the Passeig, right in the city centre.

🕒 0.17 Horas



Manresa

10 Torra House

Casa Torra (Torra House) was designed by Ignasi Oms i Ponsa in 1910, at the height of maturity of his work. Still stands as the approaches of both integrated and independent house in the city by a very original and typically modernist

🕒 0.17 Horas



Afternoon
16:00-21:00

Manresa

1 The Casino

Considered the principal Modernist building in Manresa, the Casino was built by Ignasi Oms i Ponsa

🕒 0.17 Horas



Manresa

2 Kursaal Theatre

The Kursaal theatre is a cultural facility built in 1927 by the entrepreneur Andreu Cabot.

 0.17 Horas



Manresa

3 Casa Padró Domènech

The Padró Domènech House, which is also known as Xipell House, was designed in 1903 by Ignasi Oms.

 0.17 Horas



Manresa

4 Casa Gabernet Espanyol

The Gabernet Espanyol House is the work of Ignasi Oms i Ponsa and was designed in 1898

 0.17 Horas



Manresa

5 Children's Home School

Ignasi Oms designed the Children's Home School in 1901

 0.17 Horas



Manresa

6 Armengou House

The Armengou House was one of Ignasi Oms' first works in the city. It was designed between 1899 and 1900, and it shows a style halfway between eclecticism and Modern Style.

 0.05 Horas



Manresa

7 Saint Clare's Convent

Medieval origin convent, occupied by the community of Clare's nuns. During the XVIIIth century, cloistered Dominican nuns used to run this convent

 0.17 Horas



Manresa

8

La Florinda

This old flour mill, built in 1911, is a particular interpretation of industrial architecture by the local architect Ignasi Oms. It is an industrial building made of different volumes.



0.05 Horas



Manresa

9

Farinera Albareda

This flour mill was designed by Alexandre Soler i March in 1909. It is a clear example of a typical Modern Style factory. There are three different parts - the central part, which is original, and two side parts.



0.05 Horas



Manresa

10

Antic Escorxador (Former Slaughterhouse)

The building was designed in 1904 but it was not until 1906 that the foundation stone was laid



0.50 Horas

